



PROTECTA®



# Protecta Felt

- ✓ Ideal for Vertical Surfaces
- ✓ Captures Spills
- ✓ Easy to Apply and Reposition

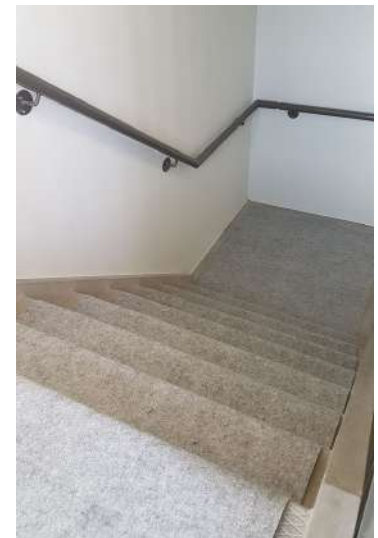
Ideal for safeguarding a range of surfaces, this product offers temporary yet reliable protection.

### Key Benefits:

- Suitable for vertical and horizontal applications
- Low tack adhesive underside
- Easy to apply and reposition
- Versatile uses including indoor and outdoor

### Main Applications:

- Suitable for vertical surfaces, including windows, doors, and lift/elevator walls
- Ideal for horizontal surfaces including stairs, floors, worktops or joinery
- Adheres to any smooth, uncontaminated surface



Code	Dimensions	Thickness
PFE1025-2	1m x 25m Roll	2mm
PFE1025-3	1m x 25m Roll	3mm
PFE1025-5	1m x 25m Roll	5mm

Temporary surface protection is designed to protect surfaces from superficial damage. Users should ensure that the substrate can take the weight of any equipment or materials being used regardless of protection being in place.